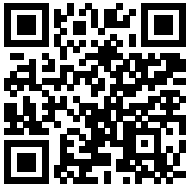


Important Safety Information

- This Voltex Smoke Alarm is designed for use in residential dwellings. It is intended to detect smoke before it reaches the sleeping occupants of a building. The ensuing alarm is designed to wake the occupants and give them time to evacuate the building.
- This smoke alarm SHALL be installed in accordance with national and local council building regulations and the latest edition of the Australian and New Zealand wiring Rules AS/NZS 3000. Building codes and regulations may vary from each state jurisdiction.
- The smoke alarm incorporates a non-replaceable battery which is manufactured to power the smoke alarm for at least 10 years without being recharged subject to normal use and regular maintenance from the date of manufacture.

Recommended Installation Locations

- At least one smoke alarm shall be fitted on each storey (including basements) - in each bedroom and in corridors or hallways which connect bedrooms and the rest of the dwelling or as required by relevant local legislation.



<https://www.voltexelectrical.com.au/p-3899-battery-only-photoelectric-smoke-alarm-sealed-10-year-lithium-wireless-interconnect.aspx?ITEM-004319>

- Where practicable smoke alarms should be placed on the ceiling.
- It is important to install the smoke alarm in the centre of the room, avoiding dead air spaces (an area in which trapped hot air will prevent smoke from reaching the alarm). Smoke alarms must not be placed within:
 - > 300mm of a corner of a ceiling and a wall
 - > 300mm of a light fitting
 - > 400mm of an air-conditioning vent
 - > 400mm of the blades of a ceiling fan
- Smoke alarms must be paired (interconnected) with every other smoke alarm so they all activate together

SINGLE FLOOR

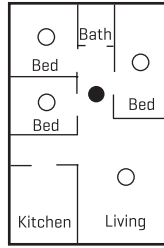


Figure B

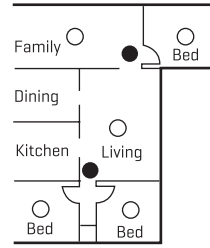
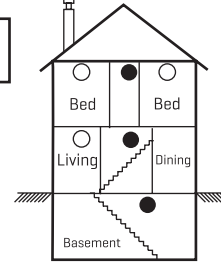


Figure C

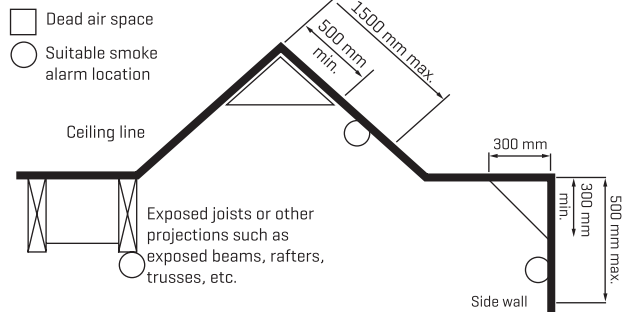


- Minimum Protection
- Additional Protection

Recommended locations

Where it is not possible to place the alarm on the ceiling, the smoke alarm may be installed on the wall at a minimum of 300mm and a maximum of 500mm off the ceiling at the junction of the wall.

There are special requirements for stairways, sloping ceilings and ceilings with exposed beams. Specific requirements are explained in the relevant Building Regulation.

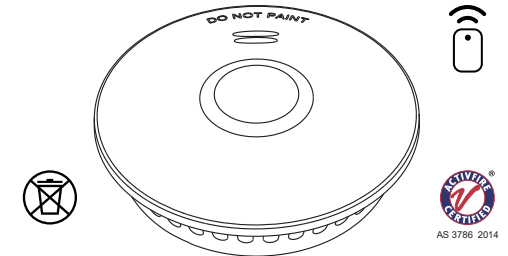


Nuisance Alarms

To reduce the likelihood of nuisance alarms, do not install a smoke alarm near cooking appliances, in bathrooms, laundry rooms, or close to heating and cooling supply vents. Do not install a smoke alarm in dusty or dirty areas. Do not install a smoke alarm where bugs or insects are present.

VOLTEx[®]
ELECTRICAL ACCESSORIES

SAS115BW SMOKE ALARM USER MANUAL



**Thank you for purchasing a Voltex Smoke Alarm.
Please read these instructions carefully
before installation and operation.**

Sensing Type	Photoelectric [Type A - contains no radioactive material]
Power Supply	Non-replaceable 10 Year Lithium Battery
Interconnectivity	Wireless [433.42MHz]
Wireless range	Up to 100m in open space
Interconnection	Maximum 40 paired alarms
Size	114mm x 38mm
Temp range	0°C - 45°C
Max Humidity	5%-95%RH
Alarm Signal Pattern	ISO 8201
Alarm Volume	85dB at 3m
Hush Time	10 mins
Compliance	AS 3786:2014
Certification	CSIRO Verification Service

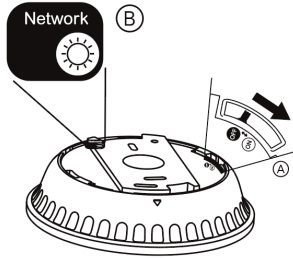
Note: Compatible with Wireless Remote [SASREM]

Installation Procedure

- Smoke alarms should be paired before mounting.

PAIRING

NOTE: Smoke alarms can be paired and unpaired indefinitely.



- Turn on each alarm by rotating the mounting bracket to ON position.
- Test each smoke alarm individually by pressing and holding the test button on the front centre of the smoke alarm for 2 seconds. The smoke alarm will sound after a short delay.
- Press the test button on any smoke alarm 3 times within 2 seconds to enter "Pairing Mode". This unit now becomes the MASTER smoke alarm. Suggest to mark the MASTER unit at back for adding more SLAVE smoke alarm in the future.
- The MASTER alarm will search for any slave alarms to pair with. MASTER alarm will exit pairing mode after 30 seconds of inactivity has elapsed.
- On the SLAVE alarm press the test button 3 times within 2 seconds to enter pairing mode. If the LED on both alarms is GREEN for 5 seconds they have been successfully paired. The MASTER alarm LED will then turn BLUE until another pairing request is received. The SLAVE alarm LED will turn off and the MASTER alarm is now ready to pair to the next SLAVE.

Repeat pairing process for any additional SLAVE smoke alarms required.

The Network status is indicated on the NET LED on the back of the alarm.

- RED LED indicates there is no network available yet.
- BLUE LED indicates device is sending pairing request
- GREEN LED indicates the device is pairing

- When all SLAVE alarms have been paired successfully, press the test button on the MASTER smoke alarm to exit pairing mode, or wait 30 seconds to automatically exit. The BLUE LED will TURN OFF.

NOTE: If the MASTER smoke alarm fails to pair within 30 seconds or the button is pressed again 3 times in 2 seconds the unit will return to normal standby mode. To continue pairing, repeat step d) and e). Once a SLAVE smoke alarm is paired, the 30 seconds count down will be reset. More SLAVE smoke alarms can be added into connected group later by repeating the pairing process but must pair with previous MASTER smoke alarm.

- Take the smoke alarms into the rooms where they will be installed and perform Wireless Test Procedure.

WIRELESS TEST PROCEDURE

Press and hold the test button on any alarm for at least 2 seconds to test all alarms. After a short delay, all paired alarms will chirp and flash a RED LED on the front face twice a second for 5 minutes or until the button is pressed. Check all smoke alarms are paired correctly.

- Turn off each smoke alarm by rotating the mounting bracket to OFF position.
- Place the bracket in the desired location and mark the mounting holes. Mount the base plate using the plugs and screws provided or an equivalent method.
- Insert the smoke alarm into the mounting bracket and rotate until it clicks positively into place. This will turn the smoke alarm back on.
- Test interconnection again using the Wireless Test Procedure.

To reset to factory default setting

- Remove the unit from the mounting bracket and ensure the internal switch is in the OFF position.
- Press and hold the test button while shifting the switch to the ON position. A RED LED should be lit for 3 seconds.
- When the RED LED turns off, release the test button. The RED LED should light again for 3 seconds. During these 3 seconds, press the test button momentarily to unpair the smoke alarm. The RED LED should flash for a few seconds.
- When the RED LED stops flashing the product has been returned to its factory state.
- Turn the smoke alarm off by moving the internal switch back to the OFF position.

Hush Mode

- While the unit is sounding an alarm, pushing the test button will hush the alarm for approximately 10 minutes. The red LED will flash once every 8 seconds to indicate the smoke alarm is running in hush mode.
- If more than one alarm is paired, identify the alarm with the red flashing LED, as this will be the only alarm that can be hushed. All paired alarms will stop sounding thereafter.

Alarm Memory

In an interconnected group, only the LED on the triggered alarm flashes twice approximately every 20 seconds for one week. This can be used to identify the triggered unit.

Audio-visual Indicators

OPERATION MODE DEFINITION	RED LED STATUS	SOUND
Alarm functioning correctly	Low intensity flash every 40 seconds	-
Low Battery	Flash every 40 seconds	One chirp every 40 seconds
Internal Fault	-	One chirp every 40 seconds
Hush mode	Flash every 8 seconds	-
Smoke detected on local alarm*	Flash every 1 second	Continuous alarm signal pattern
Smoke detected on paired unit*	-	Continuous alarm signal pattern
Test on local alarm (while button pressed)	Flash once	Chirp once
Wireless test on paired unit	Flash twice every 1 second for 5 minutes	Chirp twice every 1 second for 10 seconds
Alarm memory	Flash twice every 20 seconds	-

***Smoke is detected, and the building must be vacated immediately. Emergency services must be notified.**

Maintenance

- Periodically apply the Wireless Test Procedure to test the alarm.
- Periodically clean the alarm by vacuuming the outside of the smoke alarm to remove any dust build up.
- Do not spray any cleaning liquids directly onto the smoke alarm.
- The battery is not replaceable: DO NOT ATTEMPT TO REPLACE THE BATTERY. If the low battery alarm sounds, replace the entire unit.

ALL ELECTRICAL WORK MUST BE CARRIED OUT BY A LICENSED ELECTRICAL CONTRACTOR OR ELECTRICIAN.

Document Reference Number: II20230525-TS

VOLTEX[®]

☎ AU: 1300 722 275
NZ: 0800 55 66 33

✉ sales@voltex.com

🌐 www.voltex.com

© Voltex Electrical 2023. All Rights Reserved.